



**LAURUS**<sup>®</sup>  
DESIGN ENGINEERING PRODUCTION

## About Us

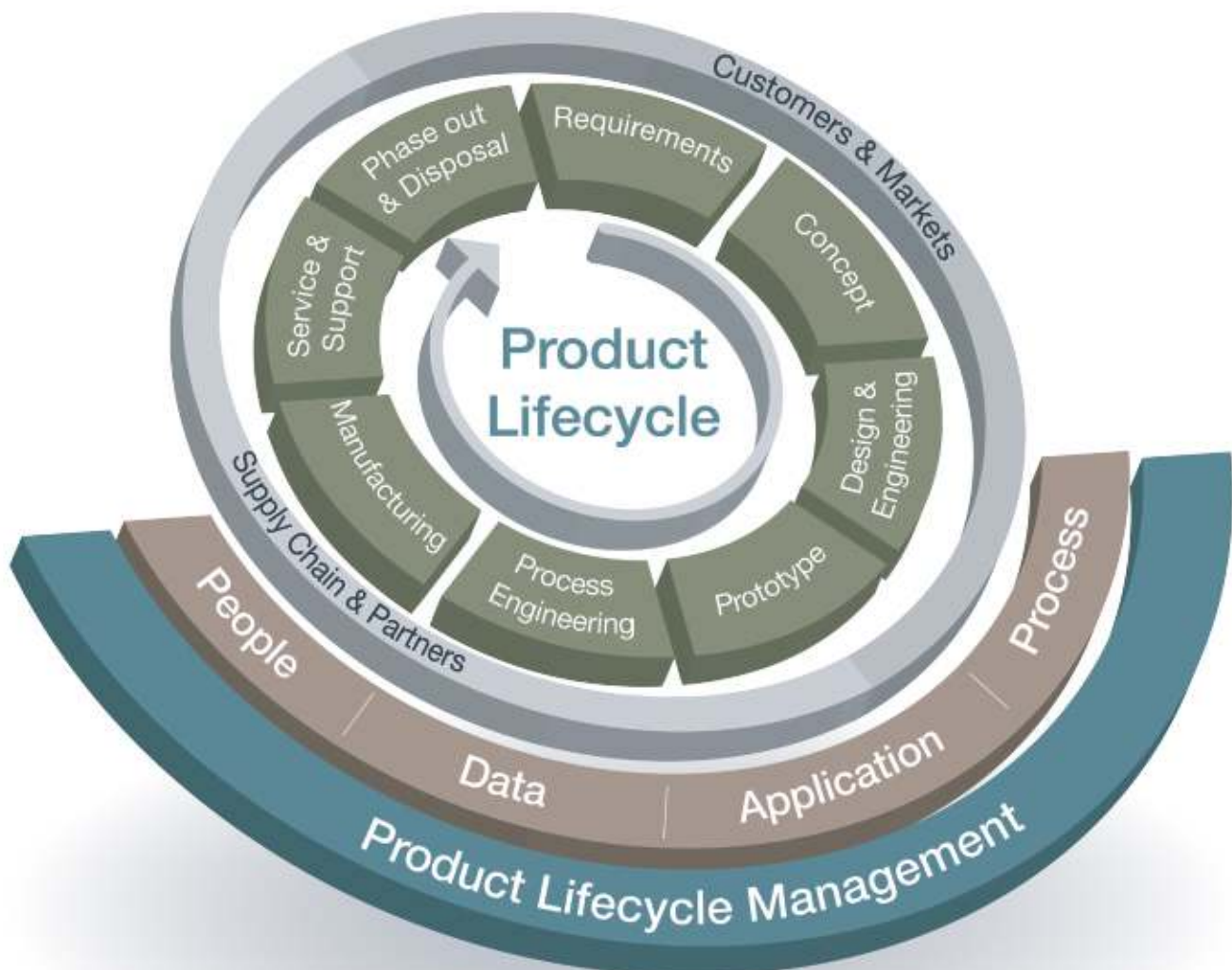
LAURUS MARINE was founded in 2009 in TUZLA. From the first moment it was established; design, engineering and manufacturing have been at the center of our company. Laurus Marine has mainly focused on yacht equipment design and manufacturing. After moving to its new location in 2013, the company has been focusing on design-oriented equipment for warships and tugboats. In recent years we have continued developing with technology and design.

## Our Misson

Transforming the process from idea to final product into qualified systems and platforms with original technical solutions is the mission of our company.

## Our Vision

To be a design, engineering and manufacturing company with extraordinary technical solutions in transportation and defense industry. Without compromising from our priority of customer satisfaction, firm reliability, and product quality with a system refreshed with feedback from all sources; competent staff who internalized the importance informatics, technology and methodology to continue our investments to become a national brand, to design value-added products that can be exported.



# VDV1

## WEATHERTIGHT SHIP DOOR



Weather-tight door for superstructure



### CHARACTERISTICS :

- Coated mild steel or stainless steel doors with central dogging mechanism.
- Corrosion resistant stainless hinge pins with grease nipples Acc. to DIN 71412 standards
- Special rubber packing cord for weather-tightness.

### PAINTING DETAIL :

- Standard :**  
**Frame & Panel (Primer):** International Intergard 269
- Optional :**  
**Frame & Panel (Top coat):** International Interthane 990 (RAL colour)

### LOCK TYPES:

Optional - Padlock

### ACCESSORIES :

- Optional :**
- Ajar hook (Acc. to DIN 81319)
  - Door stopper
  - External door closer (DORMA)
  - Proximity Switch Base Plate

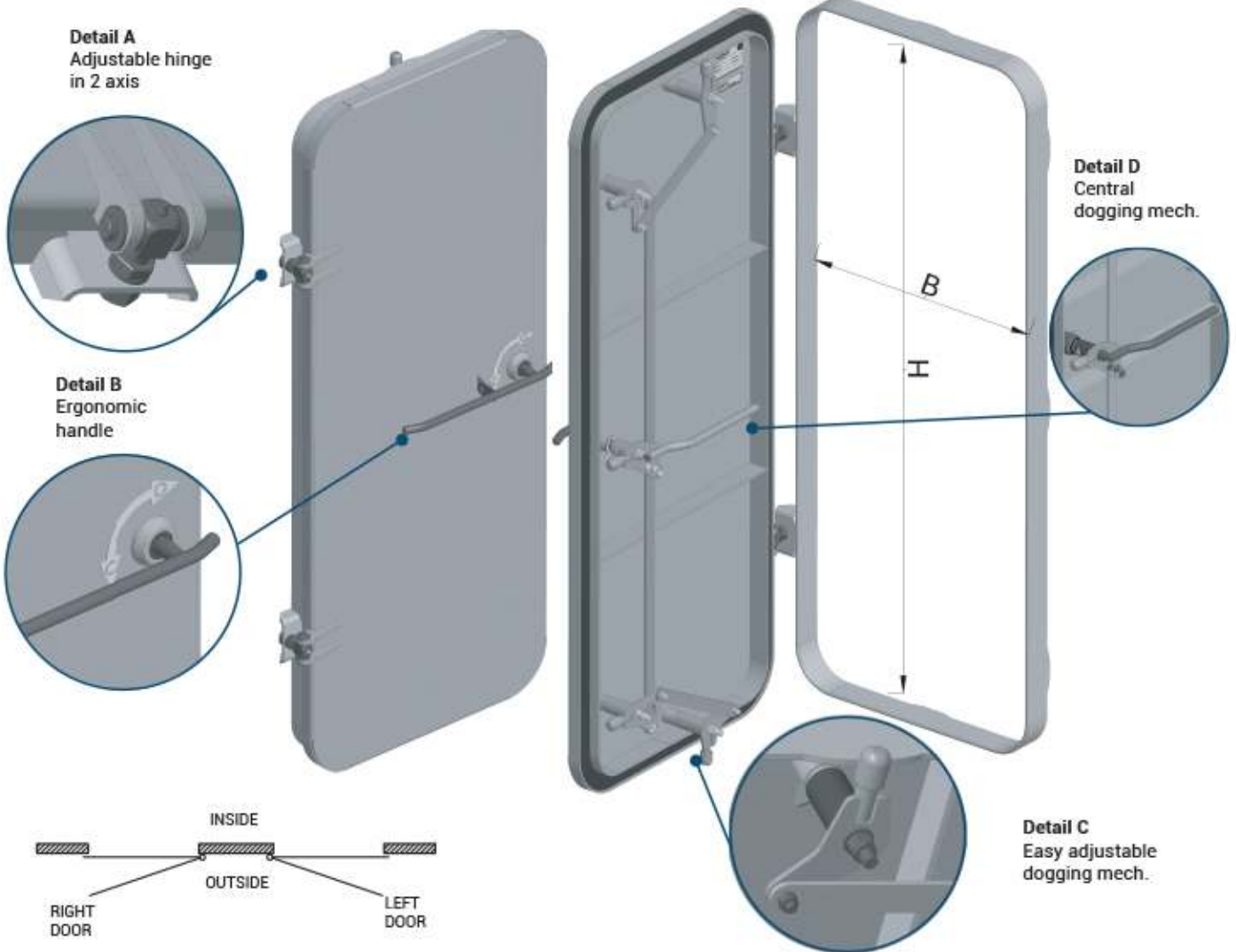


Cut out in bulkhead and overall dimensions Acc. to coaming type and radius.

FRAME (R)	R (99)	OVERALL DIMENSIONS
<b>FLAT BAR FRAME</b> (STAINLESS STEEL & STEEL)	Hc = H + 18 mm Bc = B + 18 mm • Rc = 100 mm	Ho = H + 60 mm Bo = B + 108 mm
<b>ANGLED BAR FRAME</b> (STAINLESS STEEL & STEEL)	Hc = H + 38 mm Bc = B + 38 mm • Rc = 100 mm	Ho = H + 120 mm Bo = B + 138 mm

# TECHNICAL SPECIFICATION

<b>Frame Profile</b>	Angled Bar (8 mm)	Flat Bar (8 mm)	-
<b>Frame Material</b>	Steel	Stainless Steel	-
<b>Frame Mounting</b>	Welded	-	-
<b>Frame Radius</b>	R (99)	-	-
<b>Door Panel Material</b>	Steel	Stainless Steel	-
<b>Hinge Quantity</b>	2	3	-
<b>Dogging Mech.</b>	Stainless Steel	Galvanised Steel	-
<b>Number of Dogs</b>	3	5	-
<b>Surface Treatment</b>	Standard Painting	Custom Painting	-
<b>Insulation</b>	None	50 mm thick mineral wool	-
<b>Window</b>	None	Rect. Window or Scuttle	Rect. Window or Scuttle with Cover
<b>Opening Direction</b>	Left	Right	-



# VDT1A

## WATERTIGHT SHIP DOOR



Watertight door for bulkheads



### CHARACTERISTICS :

- Coated mild steel or stainless steel doors with central dogging mechanism.
- Corrosion resistant stainless hinge pins with grease nipples Acc. to DIN 71412 standarts
- Special rubber packing cord for watertightness.

### PAINTING DETAIL :

#### Standard :

**Frame & Panel (Primer):** International Intergard 269

#### Optional :

**Frame & Panel (Top coat):** International Interthane 990 (RAL colour)

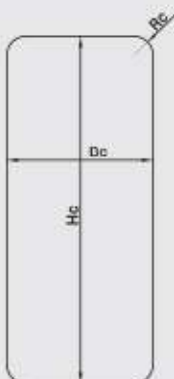
### LOCK TYPES:

Optional - Padlock

### ACCESSORIES :

#### Optional :

- Ajar hook (Acc. to DIN 81319)
- Door stopper
- External door closer (DORMA)
- Proximity Switch Base Plate

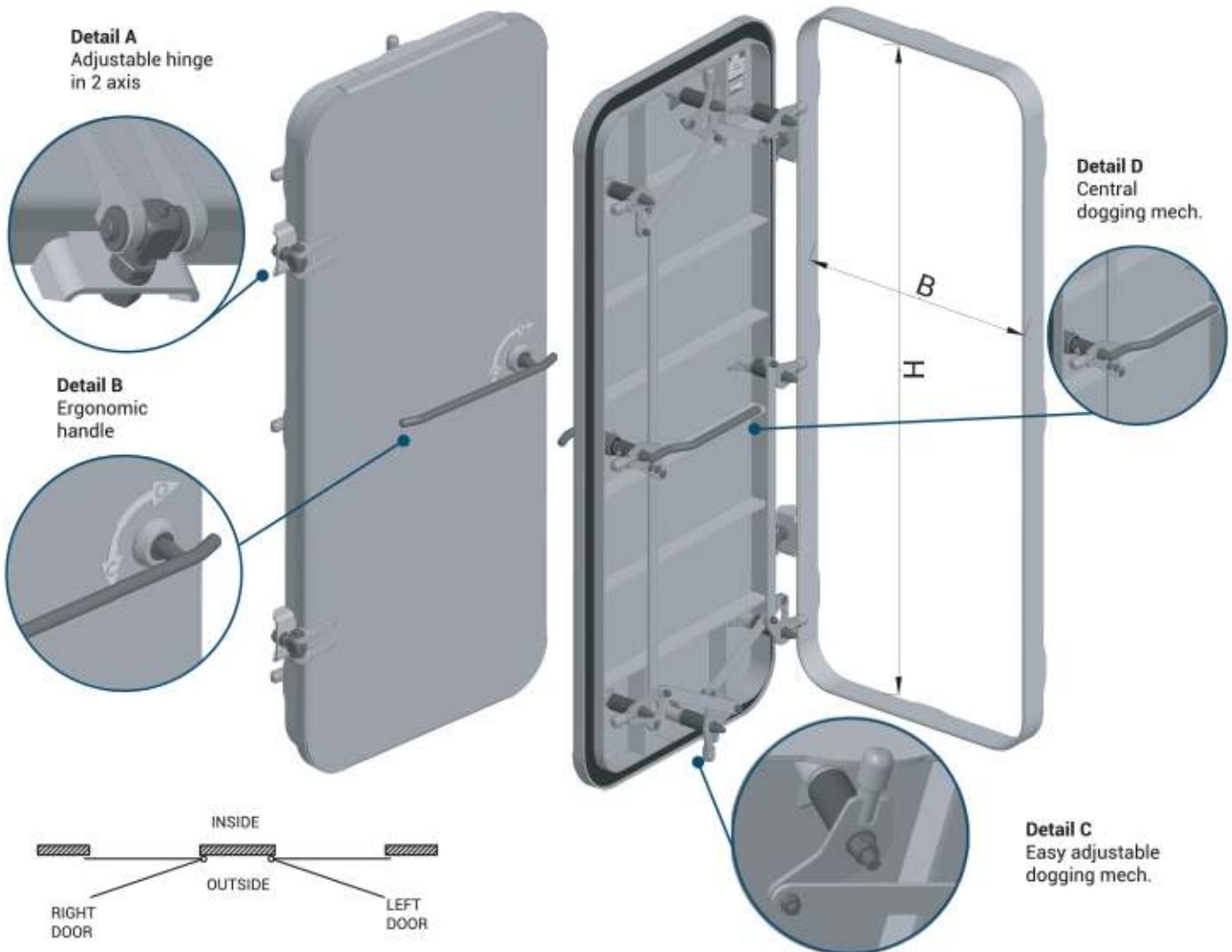


Cut out in bulkhead and overall dimensions Acc. to coaming type and radius.

FRAME (R)	R (99)	OVERALL DIMENSIONS
<b>FLAT BAR FRAME</b> (STAINLESS STEEL & STEEL)	Hc = H + 18 mm Bc = B + 18 mm • Rc = 100 mm	Ho = H + 60 mm Bo = B + 108 mm
<b>ANGLED BAR FRAME</b> (STAINLESS STEEL & STEEL)	Hc = H + 38 mm Bc = B + 38 mm • Rc = 100 mm	Ho = H + 120 mm Bo = B + 138 mm

# TECHNICAL SPECIFICATION

<b>Frame Profile</b>	Angled Bar (8 mm)	Flat Bar (8 mm)	-
<b>Frame Material</b>	Steel	Stainless Steel	-
<b>Frame Mounting</b>	Welded	-	-
<b>Frame Radius</b>	R (99)	-	-
<b>Door Panel Material</b>	Steel	Stainless Steel	-
<b>Hinge Quantity</b>	2	3	-
<b>Dogging Mech.</b>	Stainless Steel	Galvanised Steel	-
<b>Number of Dogs</b>	6	8	-
<b>Surface Treatment</b>	Standard Painting	Custom Painting	-
<b>Insulation</b>	None	50 mm thick mineral wool	-
<b>Window</b>	None	-	-
<b>Opening Direction</b>	Left	Right	-



# VDT1B

## WATERTIGHT SHIP DOOR



Heavy-duty watertight door for bulkheads



### CHARACTERISTICS :

- Coated mild steel or stainless steel doors with central dogging mechanism.
- Corrosion resistant stainless hinge pins with grease nipples Acc. to DIN 71412 standarts
- Special rubber packing cord for watertightness.

### PAINTING DETAIL :

- Standard :**  
**Frame & Panel (Primer):** International Intergard 269  
**Optional :**  
**Frame & Panel (Top coat):** International Interthane 990 (RAL colour)

### LOCK TYPES:

- Optional - Padlock

### ACCESSORIES :

- Optional :**
- Ajar hook (Acc. to DIN 81319)
  - Door stopper
  - External door closer (DORMA)
  - Proximity Switch Base Plate



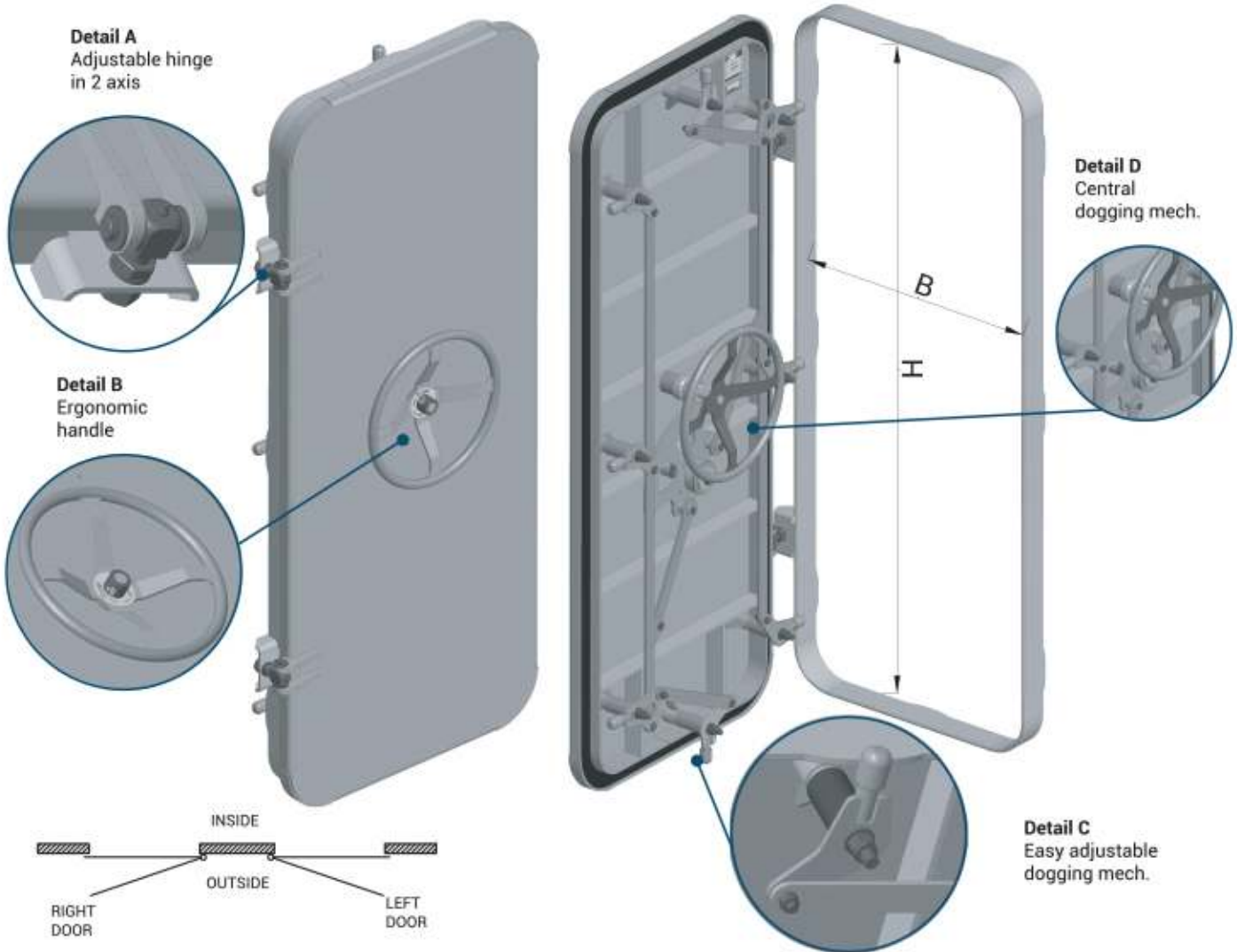
Cut out in bulkhead and overall dimensions Acc. to coaming type and radius.

FRAME (R)	R (99)	OVERALL DIMENSIONS
<b>FLAT BAR FRAME</b> (STAINLESS STEEL & STEEL)	Hc = H + 18 mm Bc = B + 18 mm • Rc = 100 mm	Ho = H + 60 mm Bo = B + 108 mm
<b>ANGLED BAR FRAME</b> (STAINLESS STEEL & STEEL)	Hc = H + 38 mm Bc = B + 38 mm • Rc = 100 mm	Ho = H + 120 mm Bo = B + 138 mm



# TECHNICAL SPECIFICATION

<b>Frame Profile</b>	Angled Bar (8 mm)	Flat Bar (8 mm)	-
<b>Frame Material</b>	Steel	Stainless Steel	-
<b>Frame Mounting</b>	Welded	-	-
<b>Frame Radius</b>	R (99)	-	-
<b>Door Panel Material</b>	Steel	Stainless Steel	-
<b>Hinge Quantity</b>	2	3	-
<b>Dogging Mech.</b>	Stainless Steel	Galvanised Steel	-
<b>Number of Dogs</b>	8	10	-
<b>Surface Treatment</b>	Standard Painting	Custom Painting	-
<b>Insulation</b>	None	50 mm thick mineral wool	-
<b>Window</b>	None	-	-
<b>Opening Direction</b>	Left	Right	-



# DV3

## WEATHERTIGHT DECORATIVE SHIP DOOR



Decorative weathertight door for superstructure

### CHARACTERISTICS :

- Coated mild steel or stainless steel doors with central dogging mechanism.
- Corrosion resistant stainless hinge pins with grease nipples Acc. to DIN 71412 standarts
- Special rubber packing cord for weathertightness.

### PAINTING DETAIL :

#### Standard :

**Frame & Panel (Primer):** International Intergard 269

**Frame & Panel (Top coat):** International Interthane 990 (RAL colour)

### LOCK TYPES:

Mortise lock and handle (Acc. to DIN 81301)

### ACCESSORIES :

#### Optional :

- Ajar hook (Acc. to DIN 81319)
- Door stopper
- External door closer (DORMA)

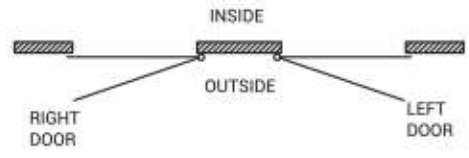
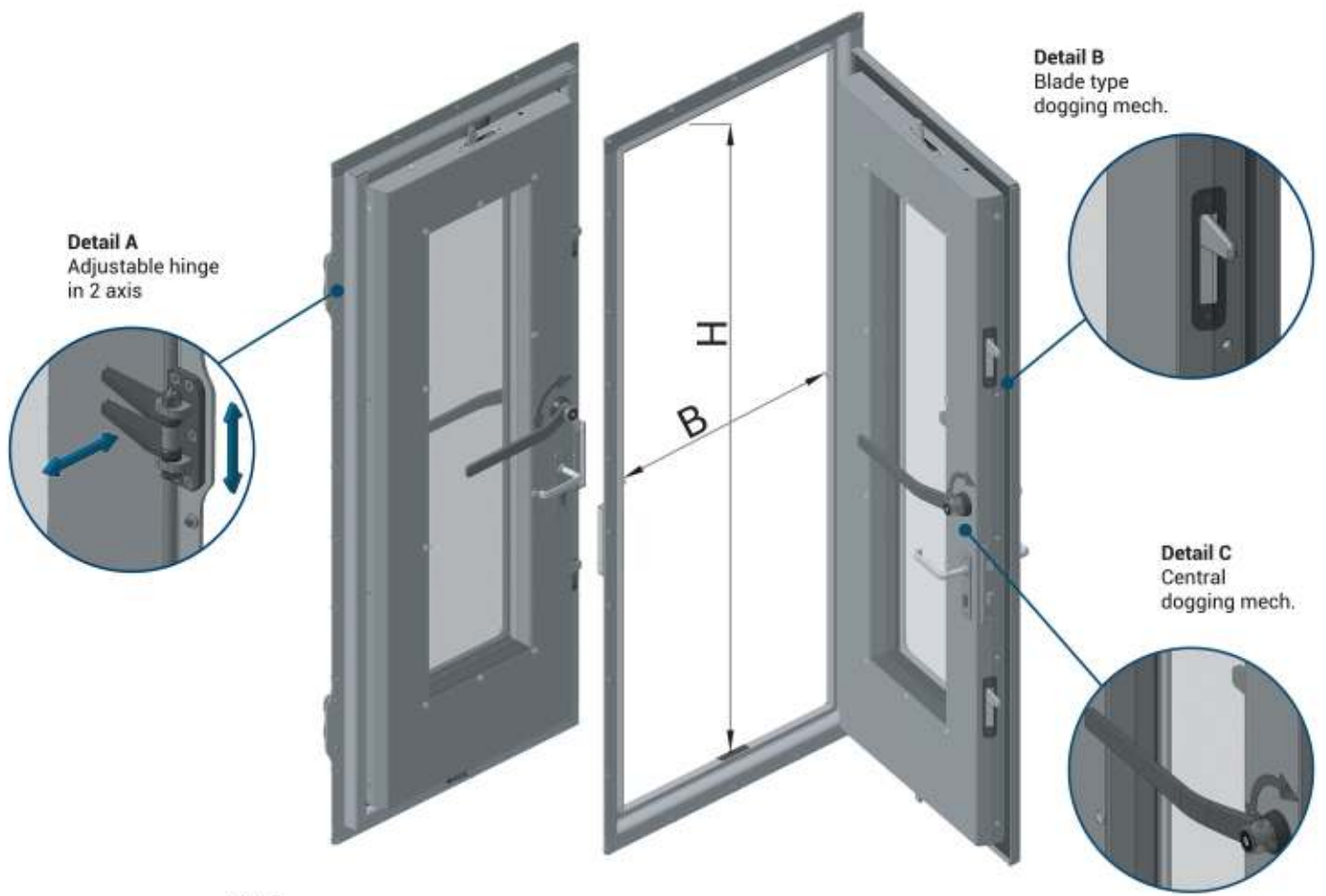


Cut out in bulkhead and overall dimensions Acc. to coaming type and radius.

FRAME (R)	R (0)	OVERALL DIMENSIONS
ANGLED BAR FRAME (STAINLESS STEEL & STEEL)	$H_c = H + 92 \text{ mm}$ $B_c = B + 92 \text{ mm}$ $\star R_c = -12 \text{ mm}$	$H_o = H + 160 \text{ mm}$ $B_o = B + 180 \text{ mm}$

# TECHNICAL SPECIFICATION

<b>Frame Profile</b>	Angled Bar (5 mm)	-	-
<b>Frame Material</b>	Steel	Stainless Steel	-
<b>Frame Mounting</b>	Bolted with SIKA 291i	-	-
<b>Frame Radius</b>	R (0)	-	-
<b>Door Panel Material</b>	Steel	Stainless Steel	-
<b>Hinge Quantity</b>	2	-	-
<b>Dogging Mech.</b>	Stainless Steel	-	-
<b>Surface Treatment</b>	Standard Painting	Custom Painting	-
<b>Insulation</b>	None	Standard (50 mm thickness mineral wool)	-
<b>Window</b>	None	Rect. Window or Scuttle	Rect. Window or Scuttle with Cover
<b>Opening Direction</b>	Left	Right	-



# VHV1A WEATHERTIGHT SHIP HATCH



Heavy-duty weather-tight hatch for deck or superstructure



## CHARACTERISTICS :

- Coated mild steel or stainless steel doors with central dogging mechanism.
- Corrosion resistant stainless hinge pins with grease nipples Acc. to DIN 71412 standards
- Special rubber packing cord for watertightness
- Suitable coaming acc to Loadline requirements

## PAINTING DETAIL :

- Standard :**  
**Coaming & Panel (Primer) :** International Intergard 269  
**Optional :**  
**Coaming & Panel (Primer) :** International Interhane 990 (RAL Colour)

## LOCK TYPES:

- Optional - Padlock
- Optional - RIM Lock

## ACCESSORIES :

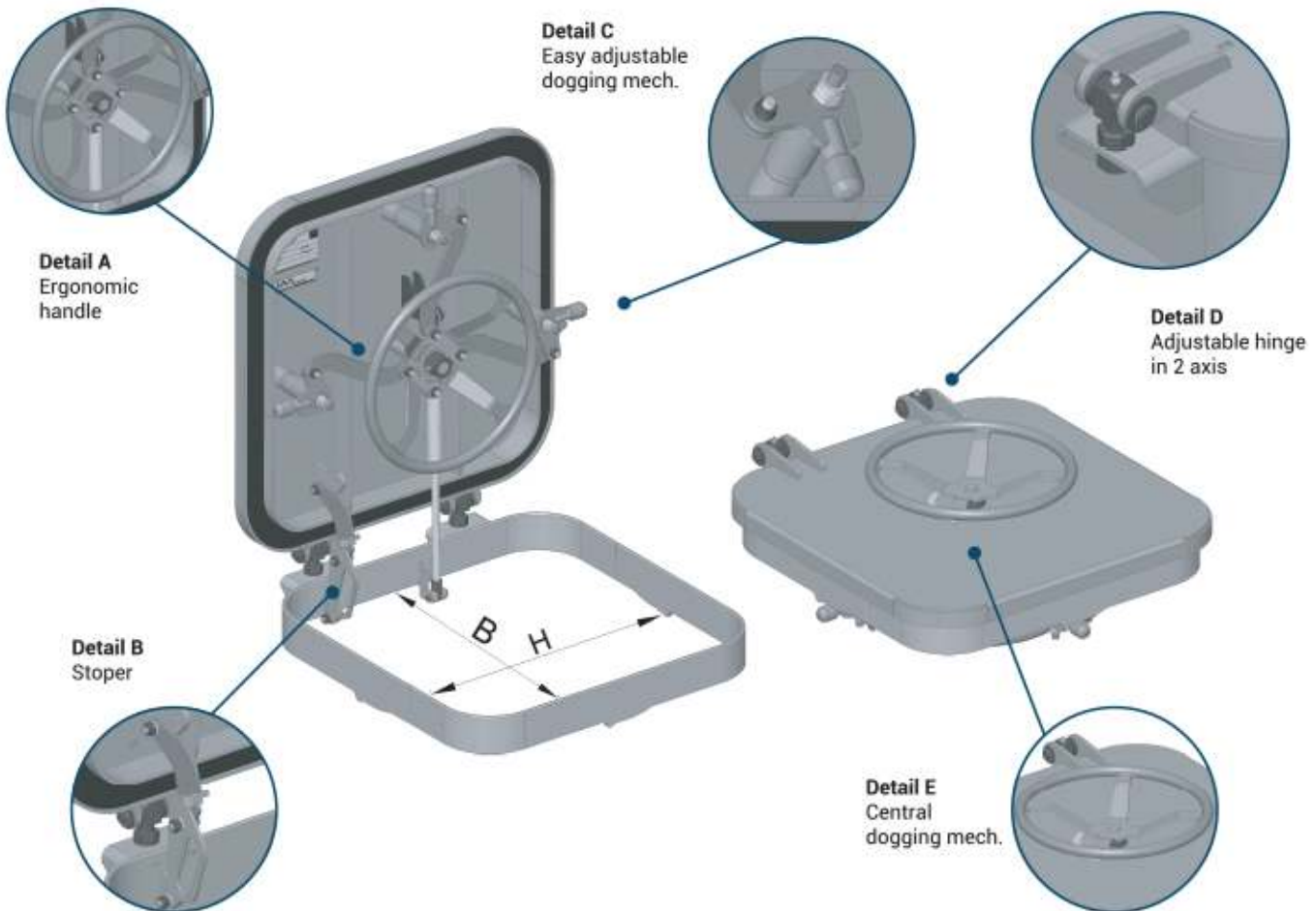
- Optional :
- Hatch Stopper to keep in open position
- Proximity Switch Base Plate

Cut out in deck and overall dimensions Acc. to coaming type and radius.

	FRAME (R)	R (99)	OVERALL DIMENSIONS
	<b>FLAT BAR FRAME</b> (STAINLESS STEEL & MILD STEEL)	$H_c = H + 18 \text{ mm}$ $B_c = B + 18 \text{ mm}$ $R_c = 100 \text{ mm}$	$H_o = H + 58 \text{ mm}$ $B_o = B + 107 \text{ mm}$

# TECHNICAL SPECIFICATION

<b>Coaming Profile</b>	Flat Bar 70-150 mm x 8 mm	-	-
<b>Coaming Material</b>	Steel	Stainless Steel	-
<b>Coaming Mounting</b>	Welded	-	-
<b>Coaming Radius</b>	R (99)	-	-
<b>Hatch Material</b>	Steel	Stainless Steel	-
<b>Hinge Quantity</b>	2	-	-
<b>Dogging Mech.</b>	Stainless Steel	Galvanised Steel	-
<b>Number of Dogs</b>	3	-	-
<b>Surface Treatment</b>	Standart Painting	Custom Painting	-
<b>Insulation</b>	None	50 mm thick mineral wool	-
<b>Standard dimensions</b>	610 x 610 (H x B)	-	-
<b>Opening Direction</b>	Top	-	-



# VHV1B

## WEATHERTIGHT SHIP HATCH WITH COAMING



Heavy-duty weather-tight hatch for deck or superstructure



### CHARACTERISTICS :

- Coated mild steel or stainless steel doors with central dogging mechanism.
- Corrosion resistant stainless hinge pins with grease nipples Acc. to DIN 71412 standards
- Special rubber packing cord for watertightness
- Suitable coaming Acc. to Loadline requirements

### PAINTING DETAIL :

- Standard :**  
**Coaming & Panel (Primer) :** International Intergard 269  
**Optional :**  
**Coaming & Panel (Primer) :** International Interhane 990 (RAL Colour)

### LOCK TYPES:

- Optional - Padlock
- Optional - RIM Lock

### ACCESSORIES :

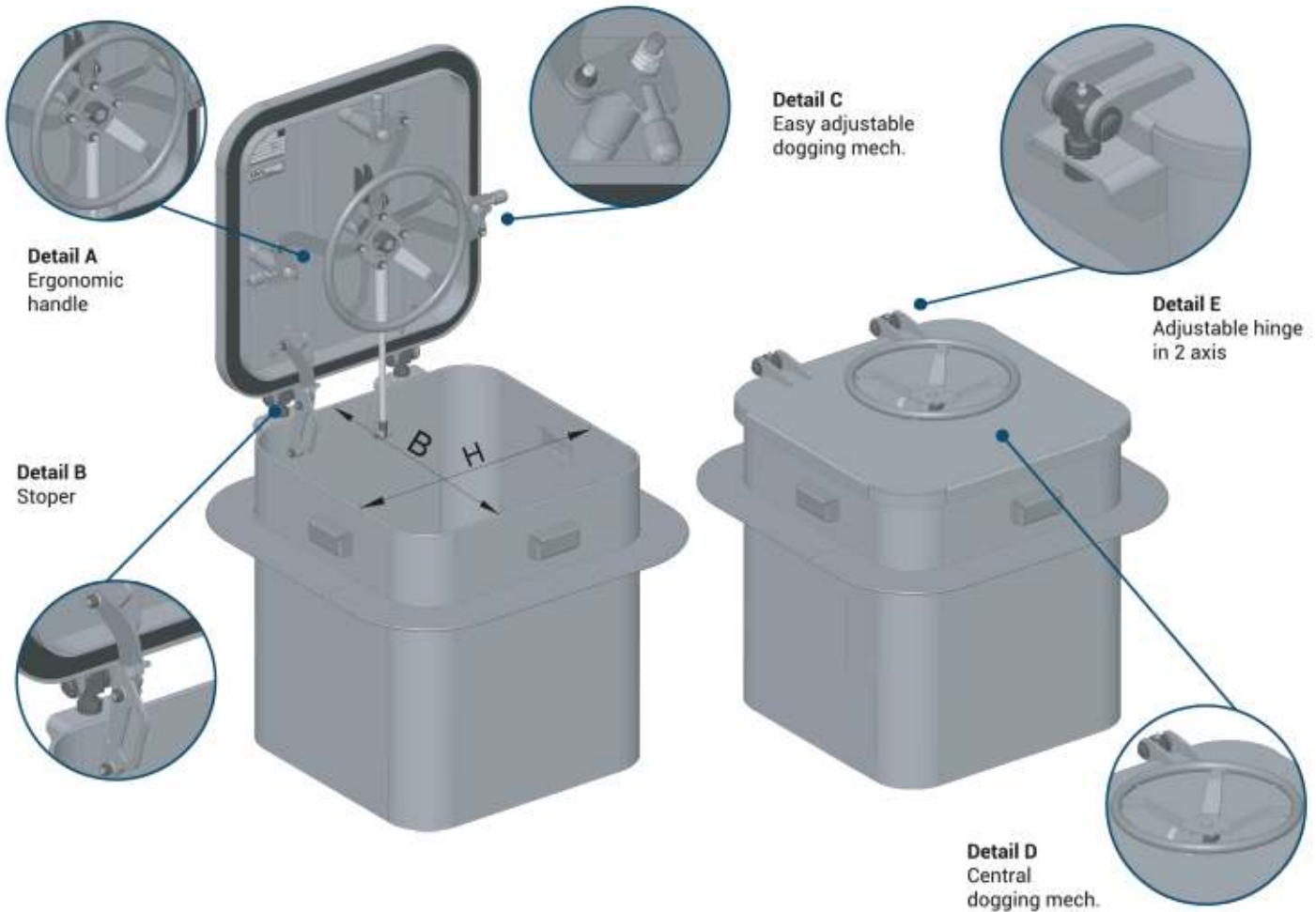
- Optional :
- Hatch Stopper to keep in open position
- Proximity Switch Base Plate

Cut out in deck and overall dimensions Acc. to coaming type and radius.

	FRAME (R)	R (99)	OVERALL DIMENSIONS
	<b>FLAT BAR FRAME</b> (STAINLESS STEEL & MILD STEEL)	Hc = H - 12 mm Bc = B - 12 mm • Rc = 88 mm	Ho = H + 218 mm Bo = B + 218 mm

# TECHNICAL SPECIFICATION

<b>Coaming Profile</b>	Flat Bar 150-700 mm x 8 mm	-	-
<b>Coaming Material</b>	Steel	Stainless Steel	-
<b>Coaming Mounting</b>	Welded	-	-
<b>Coaming Radius</b>	R (99)	-	-
<b>Hatch Material</b>	Steel	Stainless Steel	-
<b>Hinge Quantity</b>	2	-	-
<b>Dogging Mech.</b>	Stainless Steel	Galvanised Steel	-
<b>Number of Dogs</b>	3	-	-
<b>Surface Treatment</b>	Standart Painting	Custom Painting	-
<b>Insulation</b>	None	50 mm thick mineral wool	-
<b>Standard dimensions</b>	610 x 610 (H x B)	-	-
<b>Opening Direction</b>	Top	-	-



# VHT3A

## WATERTIGHT FLUSH HATCH



Heavy-duty flush watertight hatch for deck



### CHARACTERISTICS :

- Coated mild steel or stainless steel doors with central dogging mechanism.
- Corrosion resistant stainless yoke hinges
- Special rubber packing cord for watertightness
- Suitable coaming drain connection

### PAINTING DETAIL :

- Standard :**  
**Coaming & Panel (Primer) :** International Intergard 269
- Optional :**  
**Coaming & Panel (Primer) :** International Interhane 990 (RAL colour)

### LOCK TYPES:

Optional - Padlock

### ACCESSORIES :

- Optional :**
- Hatch Stopper to keep in open position
  - Proximity Switch Base Plate

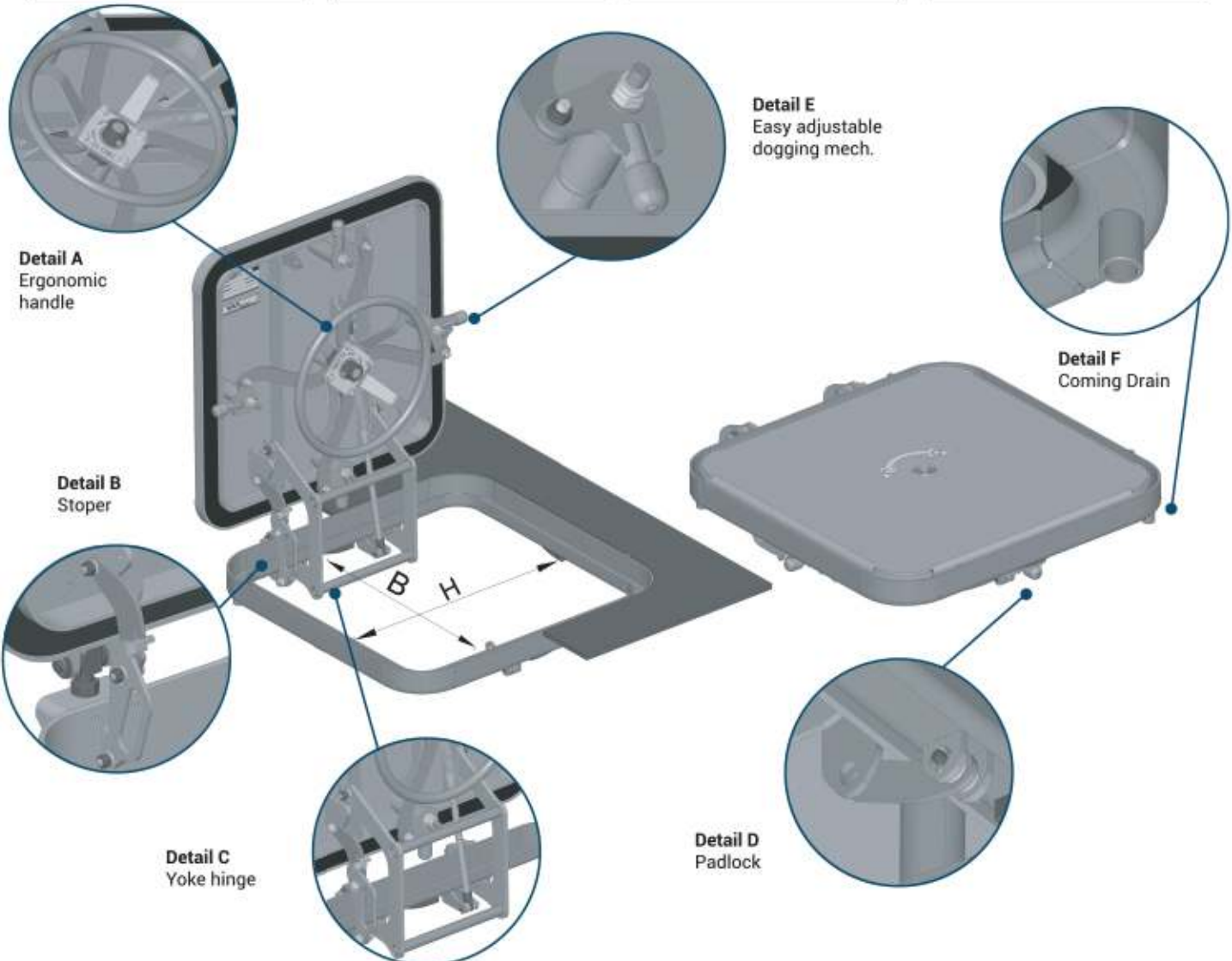
Cut out in deck and overall dimensions Acc. to coaming type and radius.

	FRAME (R)	R (105)	OVERALL DIMENSIONS
	ANGLED BAR FRAME (STAINLESS STEEL & MILD STEEL)	$H_c = H + 102 \text{ mm}$ $B_c = B + 102 \text{ mm}$ $R_c = 106 \text{ mm}$	$H_o = H + 100 \text{ mm}$ $B_o = B + 237 \text{ mm}$



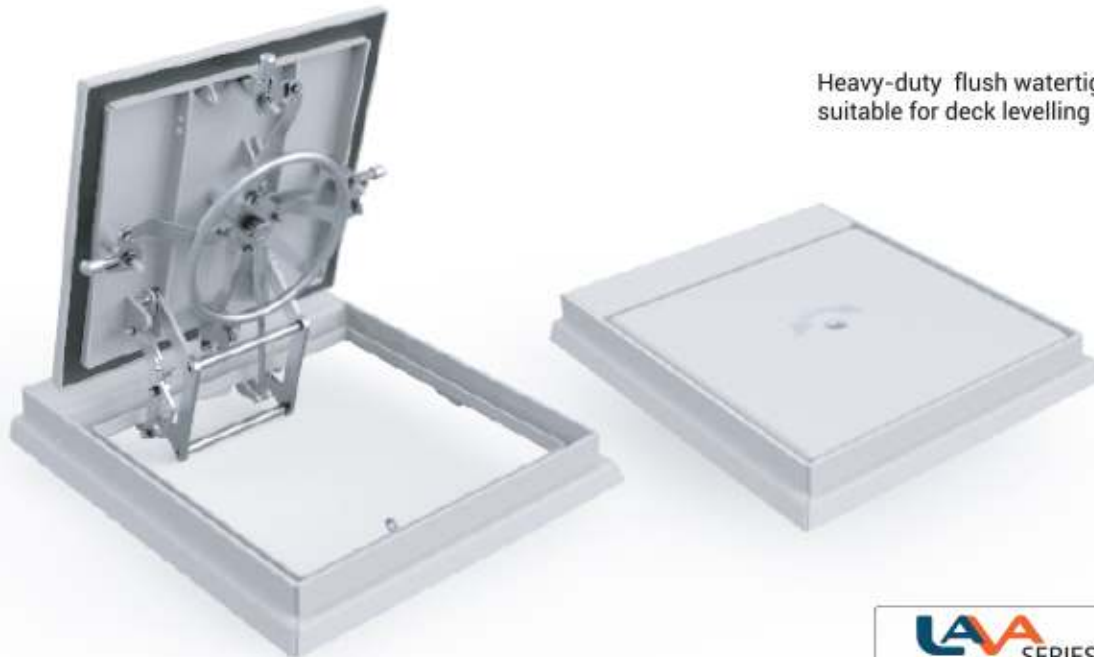
# TECHNICAL SPECIFICATION

Coaming Profile	Angle Bar 6 mm	-	-
Coaming Material	Steel	Stainless Steel	-
Coaming Mounting	Welded	-	-
Coaming Radius	R (105)	-	-
Hatch Material	Steel	Stainless Steel	-
Hinge Quantity	2	-	-
Dogging Mech.	Stainless Steel	Galvanised Steel	-
Number of Dogs	4	-	-
Surface Treatment	None	Standart Painting	Custom Painting
Insulation	None	50 mm thick mineral wool	-
Standard dimensions	610 x 610 (H x B)	610 x 410 (H x B)	720 x 720 (H x B)
Opening Direction	Top	-	-



# VHT3D

## WATERTIGHT FLUSH HATCH FOR DECK LEVELING



Heavy-duty flush watertight hatch for deck, suitable for deck levelling



### CHARACTERISTICS :

- Coated mild steel or stainless steel doors with central dogging mechanism.
- Corrosion resistant stainless yoke hinges
- Special rubber packing cord for watertightness
- Suitable coaming drain connection

### PAINTING DETAIL :

- Standard :**  
**Coaming & Panel (Primer) :** International Intergard 269
- Optional :**  
**Coaming & Panel (Primer) :** International Interhane 990 (RAL colour)

### LOCK TYPES:

Optional - Padlock

### ACCESSORIES :

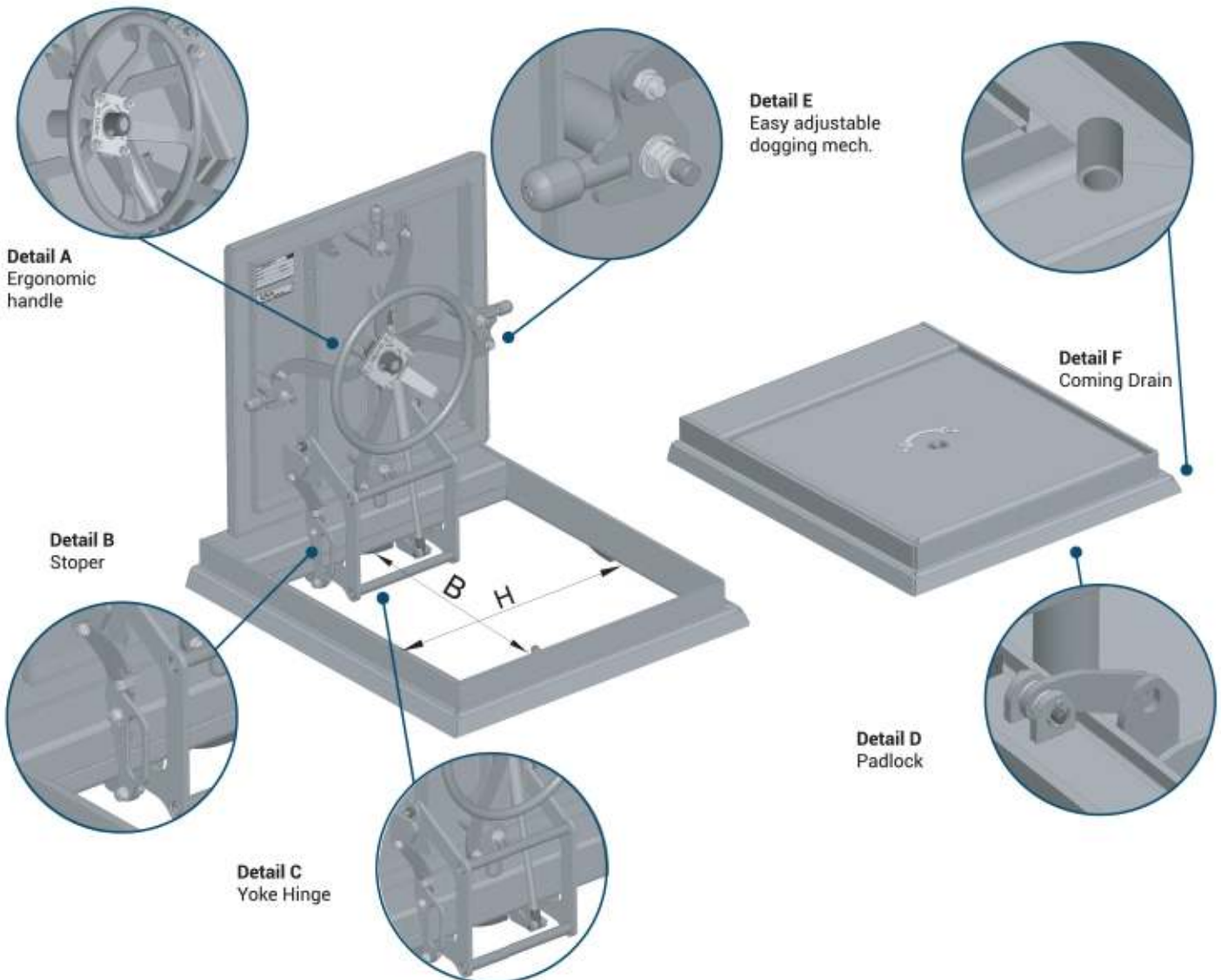
- Optional :**
- Hatch Stopper to keep in open position
  - Proximity Switch Base Plate

Cut out in deck and overall dimensions Acc. to coaming type and radius.

	FRAME (R)	R (0)	OVERALL DIMENSIONS
	ANGLED BAR FRAME (STAINLESS STEEL & MILD STEEL)	$H_c = H + 140 \text{ mm}$ $B_c = B + 240 \text{ mm}$ $R_c = 30 \text{ mm}$	$H_o = H + 170 \text{ mm}$ $B_o = B + 272 \text{ mm}$

# TECHNICAL SPECIFICATION

Coaming Profile	Angled Bar 6 mm	-	-
Coaming Material	Steel	Stainless Steel	-
Coaming Mounting	Welded	-	-
Coaming Radius	R (0)	-	-
Hatch Material	Steel	Stainless Steel	-
Hinge Quantity	1	-	-
Dogging Mech.	Stainless Steel	Galvanised Steel	-
Number of Dogs	4	-	-
Surface Treatment	None	Standart Painting	Custom Painting
Insulation	None	50 mm thick mineral wool	-
Standard dimensions	610 x 610 (H x B)	610 x 410 (H x B)	-
Opening Direction	Top	-	-



# AM1A

## MIST ELIMINATOR



Heavy-duty mist eliminator for marine applications

### CHARACTERISTICS :

- High Efficiency Droplet Separator for mounting on Bulkhead.
- Profiles made of high tensile aluminium alloy, salt resistant.
- Available in different sizes and shapes.

### PAINTING DETAIL :

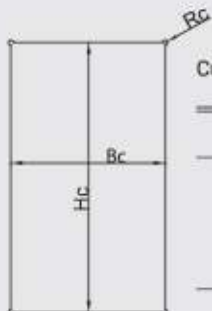
**Standard :**  
**Panel & Blade :** Custom RAL colour

### LOCK TYPES:

None

### ACCESSORIES :

None

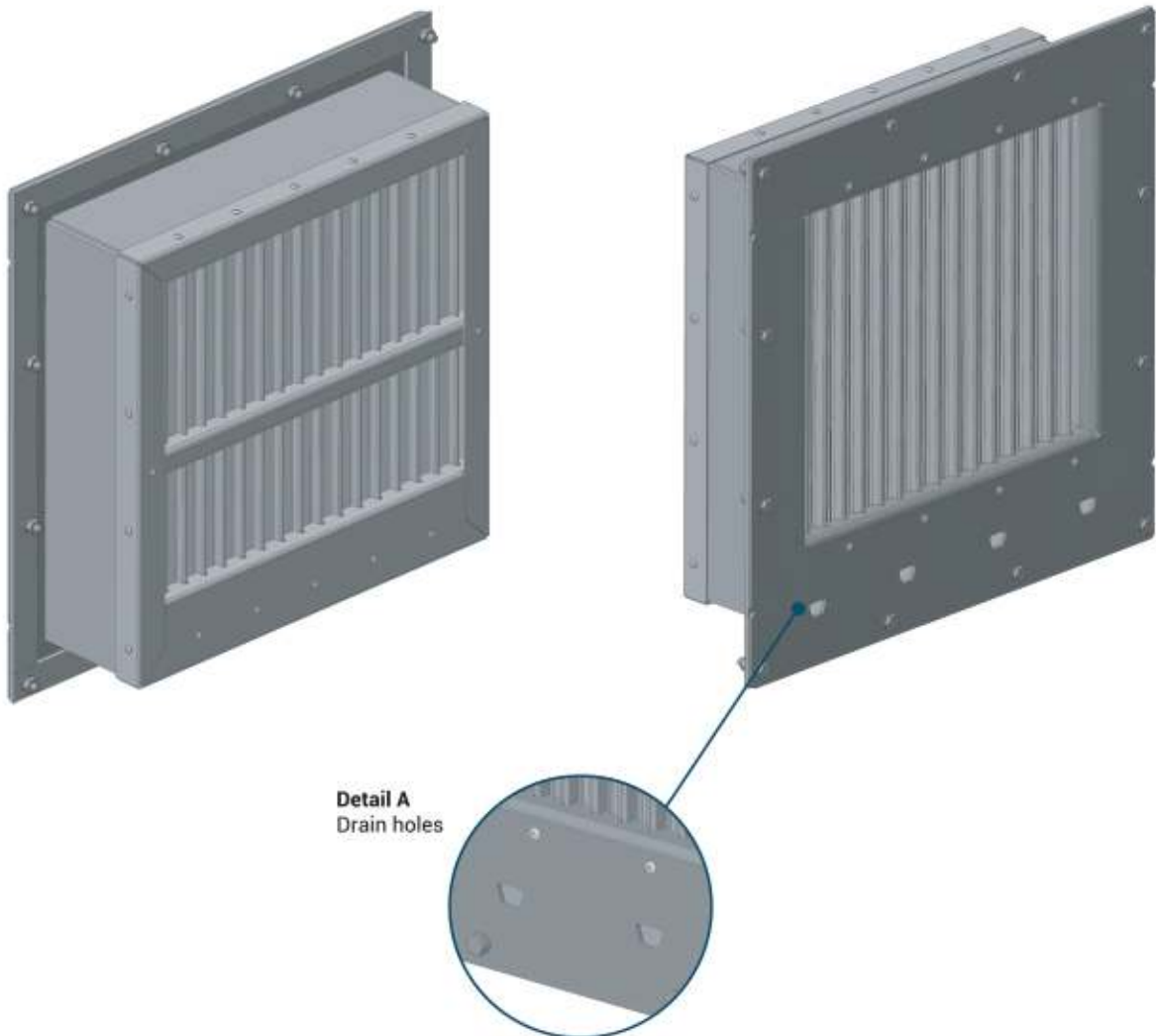


Cut out in bulkhead and overall dimensions Acc. to coaming type and radius.

FRAME (R)	R (0)	OVERALL DIMENSIONS
ANGLED BAR FRAME (STAINLESS STEEL & MILD STEEL)	$H_c = H + 137 \text{ mm}$ $B_c = B + 86 \text{ mm}$ $\star R_c = -12 \text{ mm}$	$H_o = H + 205 \text{ mm}$ $B_o = B + 262 \text{ mm}$

# TECHNICAL SPECIFICATION

<b>Frame Profile</b>	Angled Bar (6 mm)	-	-
<b>Frame Material</b>	Steel	Stainless Steel	-
<b>Frame Mounting</b>	Welded	-	-
<b>Frame Radius</b>	R (0)	-	-
<b>Panel Material</b>	Aluminium	-	-
<b>Blade Material</b>	Aluminium	-	-
<b>Filter</b>	None	G2 Type (washable)	G4 Type
<b>Surface Treatment</b>	Custom Painting	-	-



# AM1B

## MIST ELIMINATOR



Heavy-duty Mist Eliminator for marine applications (Openable Type)

### CHARACTERISTICS :

- Rectangular, High Efficiency Droplet Separator for mounting on Bulkhead.
- Profiles made of high tensile aluminium alloy, salt resistant.
- The Mist Eliminator is equipped with a hinged hatch with neoprene gasket and lock bolts with eye nuts.
- Available in different sizes and shapes.

### PAINTING DETAIL :

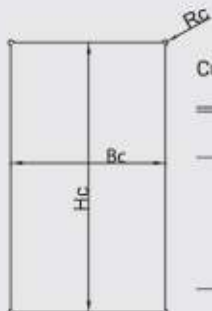
- Standard :**  
**Panel & Blade :** Custom RAL colour

### LOCK TYPES:

Screwed butterfly nut

### ACCESSORIES :

Stoper

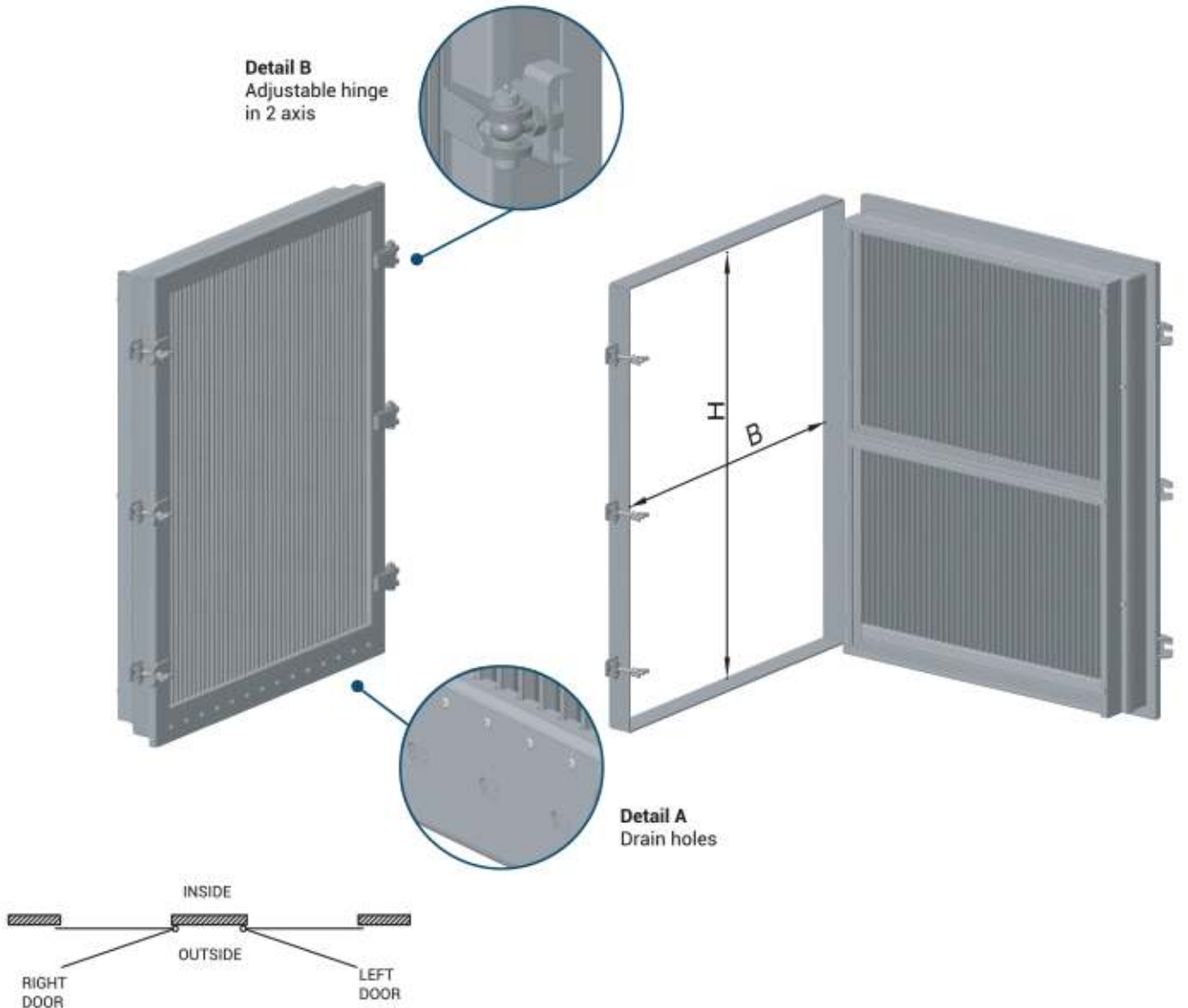


Cut out in bulkhead and overall dimensions Acc. to coaming type and radius.

FRAME (R)	R (0)	OVERALL DIMENSIONS
FLAT BAR FRAME (STAINLESS STEEL & MILD STEEL)	$H_c = H + 165 \text{ mm}$ $B_c = B + 120 \text{ mm}$ $\star R_c = -12 \text{ mm}$	$H_o = H + 205 \text{ mm}$ $B_o = B + 262 \text{ mm}$

# TECHNICAL SPECIFICATION

Frame Profile	Flat Bar (8 mm)	-	-
Frame Material	Steel	Stainless Steel	-
Frame Mounting	Welded	-	-
Frame Radius	R (0)	-	-
Panel Material	Aluminium	-	-
Blade Material	Aluminium	-	-
Hinge Quantity	2	3	-
Filter	None	G2 Type (washable)	G4 Type
Number of Lock	2	3	-
Surface Treatment	Custom Painting	-	-
Opening Direction	Left	Right	-



# AD3C

## ENGINE ROOM AIR DAMPERS



Quick -Closing Air Ventilation Dampers

### CHARACTERISTICS :

- Electrical, pneumatic or spring activated operation system
- Special tight seal is obtained through the use of a damper frame, which can minimise the passage of air when the damper is closed
- Specially designed not cause significant pressure loss, noise or flow disturbance
- Available in different sizes and shapes.

### PAINTING DETAIL :

#### Standard :

**Panel (Primer):** International Intergard 269

**Panel (Top coat):** International Interthane 990 (RAL colour)

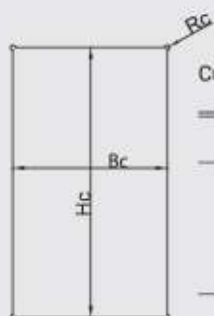
### LOCK TYPES:

None

### ACCESSORIES :

#### Optional :

- Proximity Switch Base Plate



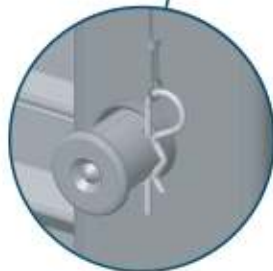
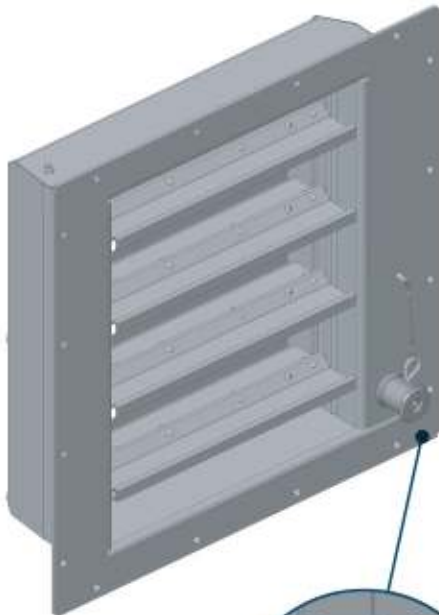
Cut out in bulkhead and overall dimensions Acc. to coaming type and radius.

FRAME (R)	R (0)	OVERALL DIMENSIONS
ANGLED BAR FRAME (STAINLESS STEEL & MILD STEEL)	$H_c = H + 50 \text{ mm}$ $B_c = B + 155 \text{ mm}$ $\ast R_c = -12 \text{ mm}$	$H_o = H + 120 \text{ mm}$ $B_o = B + 224 \text{ mm}$

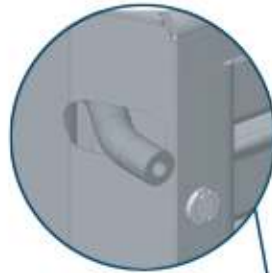


# TECHNICAL SPECIFICATION

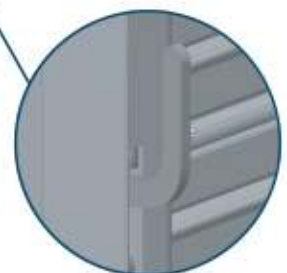
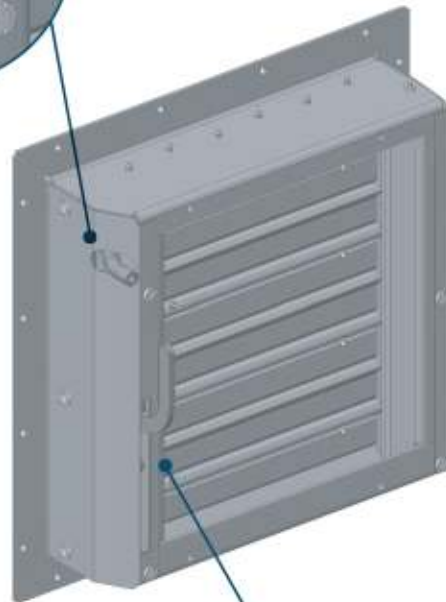
<b>Frame Profile</b>	Angled Bar (6 mm)	-	-
<b>Frame Material</b>	Steel	Stainless Steel	-
<b>Frame Mounting</b>	Welded	-	-
<b>Frame Radius</b>	R (0)	-	-
<b>Panel Material</b>	Steel	Stainless Steel	-
<b>Blade</b>	Stainless Steel	-	-
<b>Closing Mech.</b>	Manuel (by handcord) + pneumatic	Pneumatic	Electric
<b>Opening Mech.</b>	Manuel	Pneumatic	Electric
<b>Net</b>	None	Galvanised Steel	Stainless Steel
<b>Filter</b>	None	G2 Type (washable)	G4 Type
<b>Surface Treatment</b>	Standart Painting	Custom Painting	-



**Detail A**  
Manual closing button



**Detail B**  
Pneumatic hose



**Detail C**  
Manual opening mechanism

# AD3D

## ENGINE ROOM AIR DAMPERS



Quick -Closing Air Ventilation Dampers (Openable Type)

### CHARACTERISTICS :

- Electrical, pneumatic or spring activated operation system
- Special tight seal is obtained through the use of a damper frame, which can minimise the passage of air when the damper is closed
- Corrosion resistant brass hinge pins with grease nipples Acc. to DIN 71412 standarts
- Specially designed not cause significant pressure loss, noise or flow disturbance
- Available in different sizes and shapes.

### LOCK TYPES:

Screwed butterfly nut

### PAINTING DETAIL :

#### Standard :

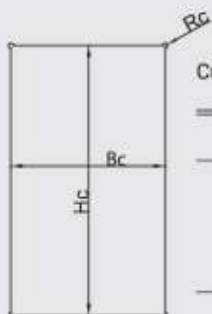
**Panel (Primer):** International Intergard 269

**Panel (Top coat):** International Interthane 990 (RAL colour)

### ACCESSORIES :

#### Optional :

- Proximity Switch Base Plate



Cut out in bulkhead and overall dimensions Acc. to coaming type and radius.

FRAME (R)	R (0)	OVERALL DIMENSIONS
FLAT BAR FRAME (STAINLESS STEEL & MILD STEEL)	$H_c = H + 60 \text{ mm}$ $B_c = B + 165 \text{ mm}$ $\ast R_c = -12 \text{ mm}$	$H_o = H + 100 \text{ mm}$ $B_o = B + 302 \text{ mm}$

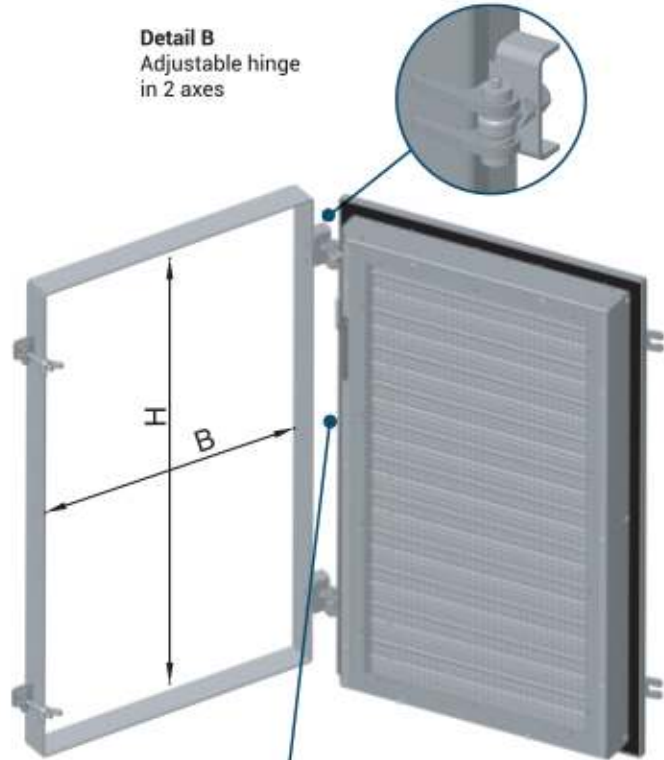
# TECHNICAL SPECIFICATION

<b>Frame Profile</b>	Flat Bar (8 mm)	-	-
<b>Frame Material</b>	Steel	Stainless Steel	-
<b>Frame Mounting</b>	Welded	-	-
<b>Frame Radius</b>	R (0)	-	-
<b>Panel Material</b>	Steel	Stainless Steel	-
<b>Blade</b>	Stainless Steel	-	-
<b>Closing Mech.</b>	Manuel (by handcord) + pneumatic	Pneumatic	Electric
<b>Opening Mech.</b>	Manuel	Pneumatic	Electric
<b>Net</b>	None	Galvanised Steel	Stainless Steel
<b>Filter</b>	None	-	-
<b>Hinge Quantity</b>	2	-	-
<b>Surface Treatment</b>	Standart Painting	Custom Painting	-
<b>Opening Direction</b>	Left	Right	-

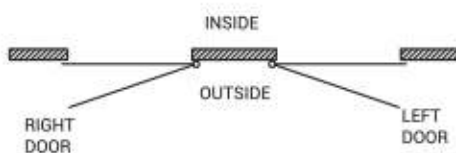
**Detail A**  
Manual closing button



**Detail B**  
Adjustable hinge in 2 axes



**Detail C**  
Manual opening mechanism



# Accessories

## Door Stop & Catch S/Steel



316L grade stainless steel door catch with rubber stopper and fixed striker plate. Hinged catch holds door firmly in the open position.

## Door Stop Spring Loaded Catch S/Steel



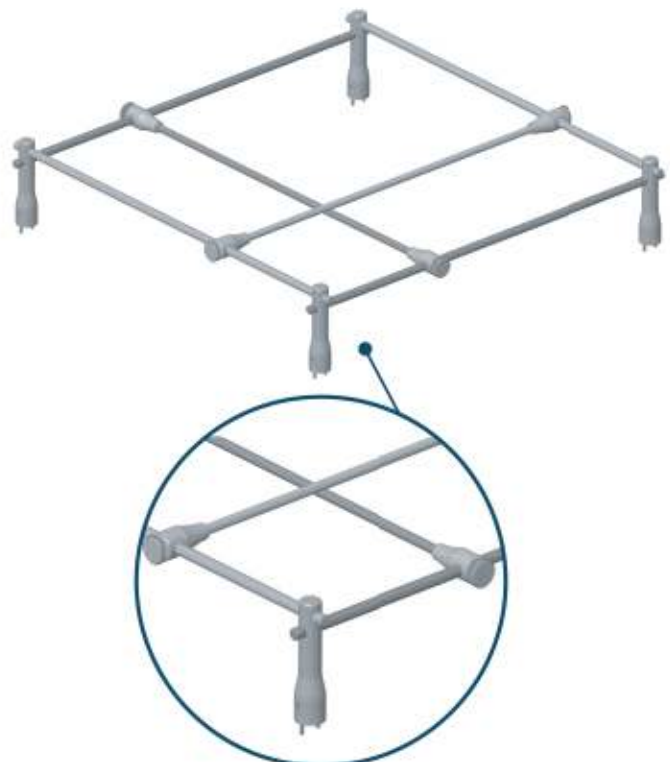
High quality door catch made from 316L grade stainless steel. This is a true anti-rattle catch with black rubber stopper. Suitable for left or right hand opening doors.

## Heavy Duty Marine Hinge



Galvanised steel or 316L Stainless Steel heavy duty hinges, Suitable for under water applications such as sea chest, box cooler grills.

## Marine Stove Pot Holder



316L marine stove pot holder prevent the pots from rolling over, adjustable bars for different pots size.



# NOTES

**LAURUS**<sup>®</sup>  
DESIGN ENGINEERING PRODUCTION



Laurus Marine Tasarım  
Mühendislik ve Denizcilik  
San.Tic.Ltd.Şti.

Mescit Mah. Demokrasi Cad.  
Birmes Sanayi Sitesi A2-Blok  
No:13/14 P.K. 34956 Tuzla  
Istanbul / TURKEY

Phone : +90 216 447 53 20

[info@laurus.com.tr](mailto:info@laurus.com.tr)  
[laurus.com.tr](http://laurus.com.tr)